



Good News

ST. TIMOTHY'S LUTHERAN CHURCH | OCTOBER 2021

Pastor's Pen

Dear Friends,

As I write this letter to you, I have just put my son down for a nap. I hope that he will sleep long enough so that I can finish this already-late letter! Navigating work and baby has given me an appreciation for the great number of parents who have needed to do this and *much more* for a year-and-a-half – and *continue* to do so. I have no idea how parents were able to support their young children's educational and emotional well-being while working from home, not having access to childcare, and not having family close by to pick up the slack or to provide extra support. You have my respect and admiration!

Though school and work life may have shifted to more in-person experiences, for those with (or without) children, it has been *impossible* to know what the reasonable risks to take might be. For those with children unable to have any extra level of protection or to make social decisions for themselves, it has felt like a nearly impossible season to make all of the "right" decisions. *What risks are reasonable? Was that a good risk because my child did not get sick? Or should I be more cautious next time, even though nothing happened this time?* And then of course, *That was okay then, but now?*

I am not assuming to know everyone's situation or to pretend that I am suddenly an expert parent, but I at least want to communicate that *I hear you*. When I have spoken with parents of young children, I will often hear something to the effect of, "This is the decision we have made, and we don't know if it's right, but this is what we feel comfortable with at this moment." Some of those

conversations have come with tears. And when we talk about the larger family, there is often a statement made about how this has been incredibly painful for them to know how to navigate, and has been a season of constant conflict. (For us, we have had not a few conversations with family members which have sounded like, "This may be a unique request for you, but these are the parameters by which we feel comfortable doing this." Or, "We took that risk, but after experiencing it, we don't want to do that again – at least not yet.")

As we launch our children's and youth ministries this fall, we recognize that families are all over the map with what they feel comfortable and are willing to do. On behalf of the pastoral staff, I want to communicate that we respect whatever decision you feel that you need to make. We also want to communicate that we are doing as much as we can to create an environment that you can feel comfortable with so that you can participate when you are ready. We encourage you to check out the various activities that are going on in the life of St. Tim's, maybe by first sending out a "scout" and then the whole family, when you're ready.

Please also know that I've got an open door (which is a bit of a metaphor with my work being half at home). You can call, text, email, or catch me in person. I want to hear how you are navigating this season, and what would be meaningful to you and your family. I hope to see you and/or hear from you soon!

On the journey with you,
Pastor Jonna



Join the Prayer Group on
St. Tim's Connect for
up-to-date prayer requests. To add or
renew a prayer request call 408-264-
3858 or email info@stlcsj.org.

Aylssa Long

Carol Mitri

Harold Nelson

Gail, Michelle, and Evalia, relatives of Carol Murray



	General	Building
OFFERINGS to date	\$699,604	\$124,854
SPENDING to date	\$840,826	\$55,580
Excess/(Shortfall)	\$(141,222)	69, 274

	Capital Campaign
OFFERINGS to date	\$182,881

2 WAYS TO GIVE

1. Mail your offering to church. If you don't have offering envelopes, be sure to indicate in the memo line which fund(s).
2. Give online on our safe and secure website
<https://www.stlcsj.org/giving/>



South Valley FISH Food Pantry

"Love your neighbor" Mark 12:31

Second Harvest Volunteers Needed

FISH has a great need for volunteers for Second Harvest shopping and order pick-ups on Thursday mornings. This important volunteer role helps to keep our pantry stocked and to offer fresh produce to our clients each week. The shift is about 1.5 hours and is a once a month commitment. Training is provided, driver screening is required and some heavy lifting is necessary. If interested, please email fishpantryvolunteer@gmail.com for more information.

SUNDAY WORSHIP TIMES

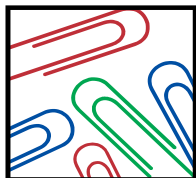
9 AM Traditional

11 AM Contemporary

Current COVID guidelines: Mask required indoors for those over the age of 2. Outdoors- no mask required.

ONLINE WORSHIP

Videos are live recorded at both morning worship services. Recordings will be available in the afternoon on our website: stlcsj.org/watch



Office Hours

Not all staff have regular hours, so it's best to schedule an appointment with them. You can find the updated list of staff emails on the staff website page:

MONDAY-THURSDAY 9 AM TO 1 PM

stlcsj.org/staff

Get Connected

Have questions about how to get involved at St. Timothy's?

Contact Gabe Tseng, Director of Discipleship and Connections

(gabriel.tseng@stlcsj.org)

Dare I call our hour between services, "happy hour?" It is in these moments and areas to be filled with whom the gospel is embodied with brothers and sisters serving, receiving and hospitable, and loving towards one another in an atmosphere of friends and family. We continue to ask you to take part in this time with bringing snacks, making coffee, or being a friendly stranger, encouraging and listening to those around you during that time.

Making coffee at church is now as easy as making coffee at your house. No more lifting the heavy 100 cup coffee urn. Our new Bunn twin coffee maker is fast and easy. You simply add coffee grounds to the basket and push a button (and no need to add water as it is connected to the water pipes)! In 5 minutes, you can brew about 30 cups of coffee with the twin coffee maker. On Sunday morning we are making 3 thermoses so in 10 minutes coffee is ready for the Fellowship Hour. If we need more coffee, it only takes a few minutes to brew a fresh pot.

If you attend the 9 am service you can either make the coffee before you attend worship or leave the last 15 minutes to get it ready and wheel it out to the coffee area. If you go to the later service, you can come early at 9:45 to get the coffee ready, partake in the Fellowship Hour, and then attend 11 am service.

Want to help out with coffee or snacks? Sign-up [here](#).



It's time to ignite the CHOIR flame once again!

Mohab is beyond excited to announce that our beloved Chancel Choir will be resuming! This month, we will begin by presenting a choir anthem for the traditional service. This year, we will be bringing back the Christmas Cantata!

Now that we're starting this new season, we will have very basic auditions for those who wish to join the choir (auditions aren't required for existing choir members), to listen to different individuals, share the vision of the choir, and assign them to a specific vocal section (Soprano, Alto, Tenor, and Bass). There's absolutely no age or experience requirements, just be passionate about God, singing, and cheesy musical jokes that may or may not be offered periodically.

For those interested in canting, Mohab will also hold auditions for the new season. However, it should be mentioned that the criteria for cantors will be much higher than the choir's since a cantor must be comfortable singing relatively large parts as a soloist. Contact Mohab via email mohab.benjamin@stlcsj.org or personally at church on Sunday before/after either service..



This month, we are kicking off the Operation Christmas Child ministry. As a church, we have three different opportunities to bless children around the world.

1. We will be packing shoeboxes as a church November 10-14. Families can sign-up for a time to come in and pack shoeboxes as a small group. We will be collecting various items for the shoeboxes to provide the items before the packing party. Look for more information about both the packing party and the collection of items in the coming weeks.
2. Families can also pack shoeboxes on their own and bring the boxes back to church. Shoeboxes will be available for families that would like to pick those up.

3. Finally, St. Timothy's is again a Drop-off Center on November 15-22 for other churches to bring their shoeboxes for us to pack and send on the next step of their journey.

If you are interested in helping plan the packing party or help with the Drop Off Center or have any questions about the Operation Christmas Child ministry, please contact Debbie Bauman at debbie@bspan.com.

St. Tim's Lunch Bunch
Thursday, October 28 at 12:00 noon
in Selbo Hall

Lunch with beverages and dessert will be provided at an anticipated cost of \$10-15 each attendee. Dessert and beverages always provided for everyone.

Ted Atlas will be presenting a talk on Henry J. Kaiser.

Kaiser was an American industrialist who became known as the father of modern American shipbuilding. Kaiser was involved in large construction projects and also organized Kaiser Permanente health care for workers and their families.

Call Betsy Grandey at (408) 629-6093 or Betty Rhodes at (408) 628-4799 for more info and RSVP. If you fancy your own food for lunch, that is OK and there is no other charge.

Lunch Bunch is a St. Tim's fellowship group open to ALL. Always a social time with lunch, and this month a very informative program. We welcome new attendees.

NAOMI CIRCLE
BIBLE STUDY

We are doing a Bible Study entitled,
"What Is the Gospel?"

Thursday, October 7 at 12:30 pm.

Fireside Room at Carter

Masks are required for everyone. We invite any woman who wants to grow in the knowledge of God to join us.

For questions call Mickey Miller at 408-371-5789 or email to mickey1970@comcast.net.

Ministry Partner Update

Each month, we will highlight updates from our domestic and global ministry partners. Many of these partnerships have been formed through congregational involvement and relationships, and are financially supported through the annual benevolences of St. Timothy's Lutheran Church.



Mt. Cross

Since 1997, St. Timothy's has financially supported Mt. Cross Ministries, our local Lutheran camp, located in the Santa Cruz Mountains. Mt. Cross was built in 1948 and was originally named Mt. Cross Lutheran Bible Camp, established for the purpose of enriching youth ministry programs. It is jointly owned by the Evangelical Lutheran Church in America and the Lutheran Church-Missouri Synod.

As with many camps and youth organizations in 2020, Mt. Cross was unable to host organized camps for many months, and needed to pivot in the way they functioned. They advertised Family Get-Aways, where families could "quaran-team" and experience a much-needed Sabbath in God's creation.

This year, Mt. Cross hosted All Family Camp, All the Time. Families had the opportunity to create their own schedule to experience camp life, whether it was one night, two nights, or every night last summer. Counselors were assigned to families to "host" their time at camp. This took shape in a variety of ways, by participating in Bible studies; going on hikes; taking part in the climbing wall, rope's course, and archery; doing arts and crafts; swimming; creating relationships with other families; and sharing God's love.



Sola Publishing

Sola Publishing seeks to provide resources that reflect the integrity of the Scriptures as the Word of God, from the perspective of the historical Lutheran Confessions. Sola is the official publishing house of the denomination and association of which we are a part, the North American Lutheran Church and Lutheran Congregations in Mission for Christ.

Sola has a variety of resources for the church and for individuals, including that of worship, Sunday school, Bible studies, and curriculum. As an NALC and LCMC congregation, we value supporting our publishing house, and utilize a variety of resources from Sola, from "Luther's Small Cat" curriculum for our First Communion class, to Bible study resources for Naomi Circle, to worship resources for Sunday worship.

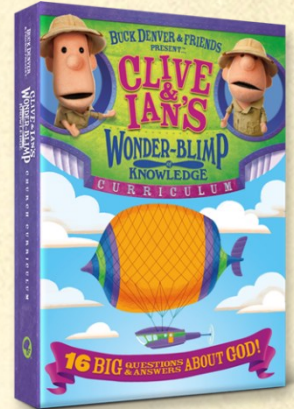
2020 was a difficult year for Sola. They were thankful to be able to continue their ministry with a lean staff, and sent an appeal to congregations for additional support. In response, we sent an additional \$3,000 from previous years' Capital Campaign benevolences to offer an extra measure of support. We received a thank-you letter in response from Director, Steve King, indicating that our support was received with much gratitude and made a significant difference in the life and ministry of Sola Publishing.



St. Tim's Kids Sunday School classes are now underway for Pre-K through 5th graders in the Bldg D classrooms! It has been wonderful seeing the children in person again! The teachers have been enjoying learning a little bit about each of the children and their families, and sharing God's Love and His Word with them. Classes will continue to be held at the same time as the 9 am worship service, with the children spending the first 10-

15 minutes in the sanctuary with their parents/guardians for some special time dedicated to the children, before being sent with their teacher to their classrooms. Children will be picked up at the classrooms after the first service (allowing some time for adult fellowship and coffee and snacks) at 10:10 -10:15 am.

In the coming weeks we'll be continuing on our adventure with Clive and Ian in their "Wonder-Blimp of Knowledge", as they help us explore many important questions about God, including Who Created the Universe, and Can I Count on God? We'll be sharing and learning about God in fun ways geared for the various children's age levels, including videos, games, crafts and puzzles. Each week, the children will be bringing home a 'discussion sheet' to share with their families. We hope you'll take the time to have those follow-up conversations with your child, perhaps at the dinner table together. We all value the importance of building strong Christian families at church and at home.



We look forward to more families with children joining us in the St Tim's Kid's classes in the coming months. Please be assured that we are following COVID protocols with masking, distancing, hand-sanitizer, and keeping well-ventilated rooms. Parents are more than welcome to stay in the classrooms with us as long as they would like, especially for children who are a little shy or hesitant.

If you have any questions, please let us know. It is a blessing for us to share God's love with your children!

Blessings to you and your families,
Tony & Leslie Mazzucco
and the entire St. Tim's Kids Ministry Team
email: TLCA@sbcglobal.net

JOB OPENING

We are looking for a new Director of Children and Family Ministry. This position is a full-time, exempt position and reports to Pastor Jonna. Responsibilities and compensation will be reviewed annually.

If interested, please submit a resume and cover letter to HR@stlcsj.org. Click [here](#) for position summary, job responsibilities, and requirements.

NURSERY CARE

6 months to 5 years

Located in room B3
(across from the Sanctuary)

Looking for a safe place for your children to be while attending worship? The nursery is open during both services!





St. Timothy's Christian Preschool

Almost all of our Preschool Staff attended service on Sunday, the 12th for our Teacher's Installment!

From L to R:

Katie Feuquay, Pam Taboada, Debra Mandanici, Sherene Saenz, Katy Stamos, Valena Bocanegra, Shawnese Laffoday, Susan Mapes, and Michelle Miller.



Not pictured: Cass Gallego, Ashley Martinez, Jessica Olivera and Director, Jeanette Adams.

Preschool is now in full swing! We have 66 students enrolled in 5 Classes:
 2's Half and Full Day ~ 3's Half Day ~ 3's Full Day ~
 and TWO Kindergarten Readiness classes... one MWF and one M-F!
 We have just started our first Chapel series on the 'Days of Creation'.
 See a photo below from one of our first Chapel classes with Pastor Jonna!



We are looking forward to the chance to return to some field trips this year like the Pumpkin Patch and the Youth Science Institute (YSI)!

We appreciate your continued prayers for the school and the staff, that we might be the light of Christ to our students! We pray you are all well and healthy!

In Christ,

Jeanette Adams - Preschool Director

Katy Stamos - Preschool Admin.

- ST. TIM'S -

YOUTH

- MIDDLE SCHOOL & HIGH SCHOOL MINISTRY -

CORNER STONE

MIDDLE AND
HIGH SCHOOL

WEDNESDAYS
6-8 PM
YOUTH HOUSE

We start together with dinner and worship then break off into our respective small groups. We end the night with a game. The Youth House will be open every week after Cornerstone until 8:30 pm.

6TH-12TH GRADE
**HALLOWEEN
PARTY**

OCTOBER 29
FROM 8 TO 9:30 PM
CARTER BUILDING

Bring a snack to share and we will have games, photo booth, prizes for best costume and the return of everyone's favorite game: GROC!

Mark it on your calendar, and be sure to invite your friends!

UPCOMING EVENT— SIGN UP NOW!

March 4-6, 2022: Winter Camp at Hume Lake

See your email for sign-up link. Cost \$250.

\$25 deposit required to hold your spot.

Contact Anna-Marie if you have any questions about Youth Ministry!

Anna-Marie Valles

annamarie.valles@stlcsj.org

Check us out on



[@sttims_youth](https://www.instagram.com/sttims_youth)